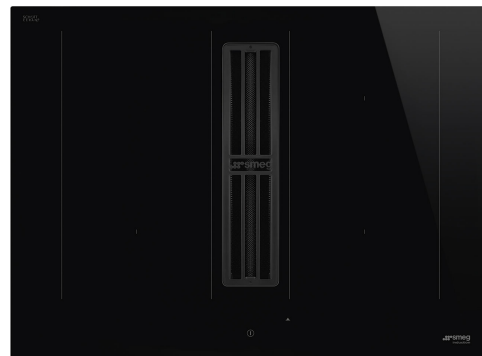


# HOBD472D2

Product Family	Hob
Built-in type	Ultra-low profile or Fully Flushed
Dimensions	70 cm
Power supply	Electric
Type	Induction with integrated hood
Extraction	Extraction
Electronic control	Yes
EAN code	8017709341862
Energy efficiency class ( EEC)	A+



## Aesthetics



Aesthetic	Universale
Colour	Black
Finishing	Glass
Material	Glass
Glass type	Ceramic
Glass edge	Straight edge
Pan stands	Stainless steel
Type of control setting	EVO Slider
Slider	Yes
LED colours	Red
Control knob position	Front
Logo	Silk screen
Serigraphy colour	Grey

## Program / Functions



No. of induction cook zones	4
Time-setting options	Spegnimento automatico
No. of cooking zones with booster	4
No. of Flexible zones	2
Main on/off switch	Yes
Power levels	9
Total no. of cook zones	4

## Options



<b>Multizone Option</b>	Yes	<b>Limited Power Consumption Mode</b>	Si Advance
<b>Flexible Zone Type</b>	MultiZone	<b>Limited Power Consumption Mode in W</b>	2800, 3500, 4500, 7400 W
<b>Worktop Cut-Out</b>	490x560 mm	<b>Showroom Demo Option</b>	Yes
<b>Keep warm automatic function</b>	Yes	<b>Control Lock / Child Safety</b>	Yes
<b>End cooking timer</b>	4	<b>Bridge option</b>	Yes
<b>Pause option</b>	Yes	<b>Cleaning option</b>	Yes
<b>Minute minder</b>	1	<b>Quick start</b>	Yes
<b>End of cooking alarm</b>	Yes	<b>Rapid level selection</b>	Yes
<b>Residual time indicator</b>	Yes		

## Technical Features



Front-left - 2.10 kW - Booster 3.00 kW - 21.0X19.0 cm			
Rear-left - 2.10 kW - Booster 3.00 kW - 21.0X19.0 cm			
Rear-right - 2.10 kW - Booster 3.00 kW - 21.0X19.0 cm			
Front-right - 2.10 kW - Booster 3.00 kW - 21.0X19.0 cm			
Multizone left - Booster 3.70 kW - 39.5x22.0 cm			
Multizone right - Booster 3.70 kW - 39.5x22.0 cm			
<b>Automatic setting according to pan dimension</b>	Yes	<b>Automatic switch off when overflow</b>	Yes
<b>pan detection</b>	Yes, min. 9 cm	<b>Residual heat indicator</b>	Yes
<b>Permanent Automatic Pot Detection with indication of the relative control</b>	Yes	<b>Protection against accidental start up</b>	Yes

## Accessories included

<b>Other accessories</b>	Filtering kit and charcoal filter regenerable included
--------------------------	--

## Electrical Connection

<b>Electrical connection rating (W)</b>	7620 W	<b>Frequency (Hz)</b>	50/60 Hz
<b>Current</b>	33 A	<b>Power supply cable length</b>	120 cm
<b>Voltage (V)</b>	220-240 V	<b>Terminal box</b>	6 poles
<b>Voltage 2 (V)</b>	380-415 V	<b>Plug</b>	Not present
<b>Type of electric cable supplied</b>	Yes, Single and Double phase		

## Controls (hood)

Hood control setting	Touch Capacitive	Display	Yes
Led color	Rosso		

## Programs / Functions (hood)

Delay function	Yes	Hood time setting	Delay
No. of speeds	8	Other options	Filter Kit included
Intensive speed	2	Automatic connection between integrated hood and hob	Yes

## Technical Features (Hood)

Free outlet maximum capacity	650 m³/h	Anti-grease filters	Inox
Motor power	220 W	Charcoal filters included	YES, regenerable
No. of filters	1	Filter replacement indicator	Yes

## Performance / Energy Label (hood)

Fluid Dynamic Efficiency (FDE)	32.10	Airbourne acoustical A-weighted sound Power Emission at minimum speed (SPEmin)	49 dBA
Fluid Dynamic Efficiency class (FDEC)	A	Airborne acoustical A-weighted sound Power Emission at maximum speed (SPEmax)	68 dBA
Lighting Efficiency (LE)	0.0 lux/W	Airbourne acoustical A-weighted sound power emission at boost speed (SPEboost)	73 dBA
Lighting Efficiency Class (LEC)	NA	Time increase factor (F)	0.8
Grease Filtering Efficiency (GFE)	85.1 %	Energy Efficiency Index	44.2
Grease Filtering Efficiency Class (GFEC)	B	Measured air flow rate at best efficiency point (Qbep)	320 m³/h
Air flow at mininum speed (Qmin)	230 m³/h	Measured air pressure at best efficiency point (Pbep)	502 Pa
Air flow at maximum speed (Qmax)	500 m³/h	Measured electric power input at best efficiency point (Wbep)	139 W
Air flow at boost speed (Qboost)	630 m³/h	Sound power level at highest setting (Lwa)	68 dBA

## Speed 1

Extraction rate IEC 61591	230 m³/h
Noise level IEC 60704-2-13	49 dBA
Pressure	280 Pa
Power	40 W

## Speed 2

Extraction rate IEC 61591	270 m³/h
Noise level IEC 60704-2-13	51 dBA
Pressure	370 Pa
Power	50 W

## Speed 3

Extraction rate IEC 61591	340 m³/h
Noise level IEC 60704-2-13	51 dBA
Pressure	400 Pa
Power	70 W

## Speed 4

Extraction rate IEC 61591	370 m³/h
Noise level IEC 60704-2-13	60 dBA
Pressure	570 Pa
Power	90 W

## Speed 5

Extraction rate IEC 61591	400 m³/h
Noise level IEC 60704-2-13	62 dBA
Pressure	500 Pa
Power	100 W

## Speed 6

Extraction rate IEC 61591	435 m³/h
Noise level IEC 60704-2-13	63 dBA
Pressure	550 Pa
Power	120 W

## Speed 7

Extraction rate IEC 61591	460 m³/h
Noise level IEC 60704-2-13	65 dBA
Pressure	600 Pa
Power	150 W

## Speed 8

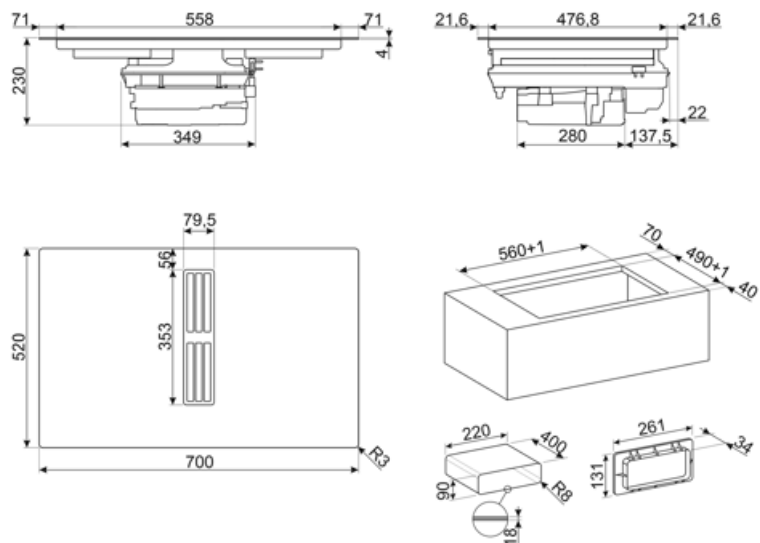
Extraction rate IEC 61591	500 m³/h
Noise level IEC 60704-2-13	68 dBA
Pressure	620 Pa
Power	170 W

## Intensive speed

Extraction rate (IEC 61591)	540 m³/h
Noise level IEC 60704-2-13	70 dBA
Pressure	625 Pa
Power	180 W

## Intensive Speed 2

Extraction rate IEC 61591	630 m³/h
Noise level IEC 60704-2-13	73 dBA
Pressure	630 Pa
Power	220 W



## Compatible Accessories



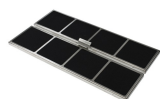
### CON60H

Flat duct connector for tubes 220\*60 mm. It help to connect more tubes of the kit KITEHOBD4



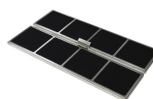
### CON90H

Connector for rectangular tubes high 90 mm. Size external 227\*94\*63 mm, internal 223\*90\*63 mm



### FLTHOBD2

n.2 high-performance carbon filters regenerable up to 8 times, washing it in the dishwasher and drying it at max 70° in the oven for max 120 minutes



### FLTSTDHOBD2

Anti Odour Filter not regenerable as spare part, suitable for recirculation mode.



### GRI60H

Rectangular Louvred grille, external size 246\*80 mm and internal 226\*60\*50 mm



### GRILLPLATE

Universal griddle for induction, gas, ceramic and electric hobs. Non-stick surface ideal for cooking meat, cheese and vegetables. Dimensions: 410 x 240 mm.



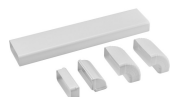
### GRIX6H

Stainless steel ventilation grille, size 426\*60 mm.



### KITDT50X10

tape for installation kit of HOBD\*2. 10 m lenght. 50 mm width.



### KITEHOBD10

Ducted kit for HOBD\*2 with tubes and curve high 10 mm.



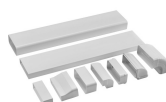
### KITEHOBD4

Filtering kit (lateral outlet) optional for Hobd: tube 1,5 mt and curve, high 60 mm



### KITREBFLOW

Rectangular grid used in ventilation system, 290 x 160 mm. Backdraft Damper for for regulating the air flow from the kitchen. Compatible for HOBD\*2 models.



### KITRHOB6

Mounting kit for recirculating installation: pipes and curves to be mounted in a plinth of minimum 6cm height. Available for HOBD\*2 series.



### KITSEBL

Squared grid used in ventilation system with backdraft Damper for regulating the air flow from the kitchen. Compatible for HOBD\*2 models.



### RED60H

Reducer from 90 to 60 mm suitable for rectangular tube of 220 mm. Size: 220x90x92 mm



### TPK



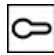











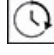


Stainless steel grill plate to cook Teppanyaki dishes



### TPKPLATE

Universal plate for induction, gas, ceramic and electric hobs. Non-stick surface ideal for cooking fish, eggs and vegetables. Dimensions: 410 X 240 mm.

## Symbols glossary

	Permanent auto pot detection		Power booster: option allows the zone to work at full power when very intense cooking is necessary.
	Child lock: some models are fitted with a device to lock the programme/cycle so it cannot be accidentally changed.		Evolution Slider totally Back-lighted ghost effect
	The slider control panel allows you to adjust the power simply by passing your finger across the touch device.		This function allows you to keep cooked food warm without burner it
	Multizone: allows several pans to be used at once, large or small, offering freedom of placement and greater flexibility		Overfill protection: The special overfill protection shuts down the stove in the presence of overflow of liquids.
	Min diameter pot detection of 9 cm		All cooking zones can be reduced to the minimum power level, so the hob can be left unattended for a short period without food overcooking or burning. Then just press again this function, the previously set power levels can be reactivated.
	Possibility to set the maximum power absorbion of the hob		Quick selection, with one touch cooking begins at the highest level, then automatically reduces after time. Ideal for dishes that require quick boiling and then continued cooking without constant control (eg beef broth).
	Quick Start function: the chosen temperature is reached faster. The heating element works at maximum power until the right temperature is reached.		Indication of residual heat: After the glass ceramic hob is switched off the residual heat indicator shows which of the heating zones still remains hot. When the temperature drops below 60 ° C, the indicator goes out.
	Time elapsed: shows how long the cooking zone has been in use.		Timer: All ceramic hobs have a timer which automatically ends cooking after a preset time.
	TWIN_ZONE_72dpi		